

**Data-driven pumping for
efficient operations.**

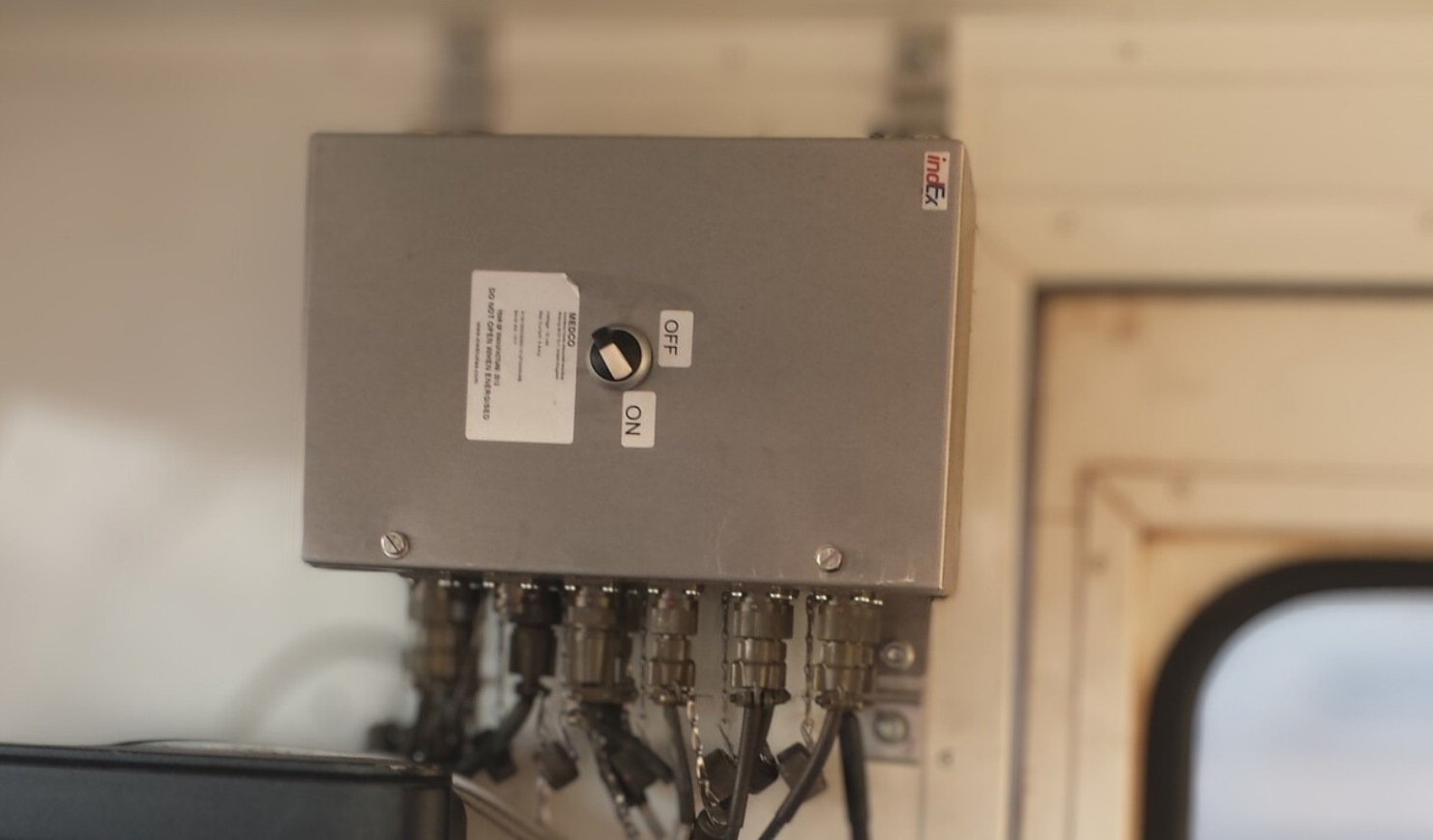


Medco House, Monument Way East, Woking
Surrey GU21 5LY - United Kingdom
info@Medcotas.com
Medcotas.com

REAM.HMI

FOR PUMPING/CEMENTING





REAM.HMI FOR PUMPING/CEMENTING

Data acquisition for pumping/cementing operations involves collecting and monitoring key parameters such as flow rate, pressure, temperature, viscosity, and power consumption to ensure safe and efficient operation of the pumping system.

Maximizing Efficiency and Safety Through Smart Data Acquisition for Pumping Operations

KEY PARAMETERS:

- **Flow Rate**

This is the rate at which the liquid or fluid is being pumped, typically measured in liters per minute (LPM) or gallons per minute (GPM)
- **Pressure**

The pressure of the fluid being pumped is a crucial parameter that needs to be monitored to ensure the system is operating within safe limits. Pressure is typically measured in pounds per square inch (PSI) or bar.
- **Temperature**

Temperature is an important parameter to monitor to ensure that the fluid being pumped is not overheating or freezing, which can cause damage to the pump or the fluid itself.